



St Denis School  
Parents and Friends Association

## **PARKING AND ROAD SAFETY GUIDELINES**

Each member of the school community has a role to play in keeping the roads around our school safe.

Parents and caregivers are responsible for the road safety of the children in their care, prior to entering and immediately upon exiting the school grounds. All parents/carers are asked to ensure that they, and any other person collecting a child, is informed of and adheres to the parking and road safety guidelines.

Always consider the rights and needs of the residents and our neighbours in the St Denis School area.

### **KEY POINTS**

Please remember from 7.30am – 9.15am and 2.30pm – 4.15pm

- The speed limit is 40kmh in school zones
- The drop off/pick up zone on Orchid Street, directly in front of the school is strictly limited to 2 minute use
- No car is to be parked in this drop off/pick up zone – this includes the paved verge area.
- Parking is only available further up Orchid St, on the school side. There are approx. 4 bays in the indented road area (as marked)
- There is no parking on the opposite verge of Orchid Street.

### **PARKING**

- Bays are available for parents and carers on Powell St, adjacent to the school. There is one designated disabled bay for permit holders only.
- Additional parking is available in the St Denis Church car park, and at the rear of the Roberts St shopping centre.
- Limited parking is available on surrounding streets. Please be mindful of our neighbours' property and park so traffic flow is not restricted. Rangers frequently monitor parking and traffic around the school area.

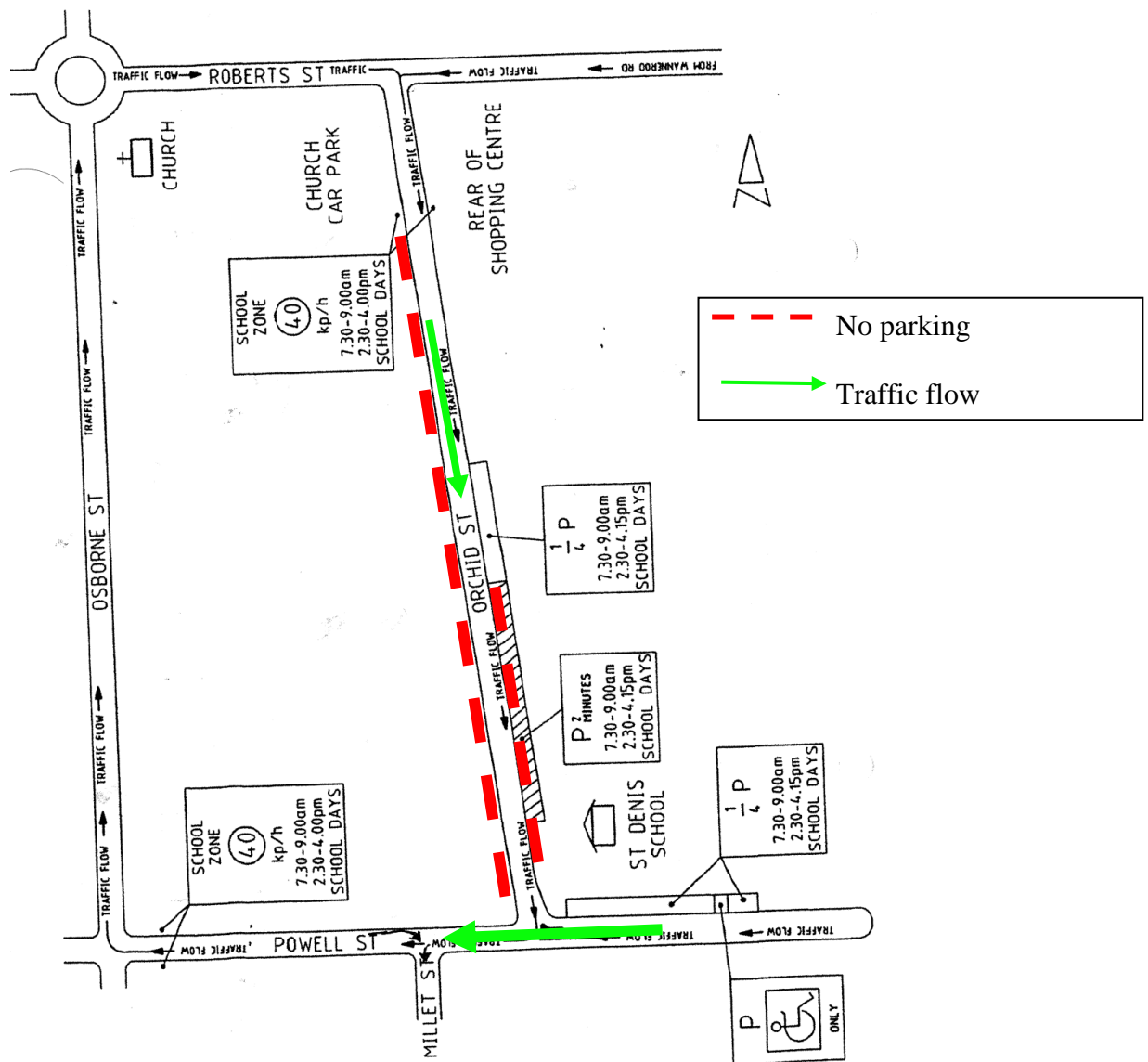
### **DROP OFF/PICK UP PROCEDURES**

- Morning:
  - Drop off zone: Do not leave your vehicle to walk your child to class. Children are to exit the vehicle on the footpath side. Where safe, drivers are asked to move along the designated area as vehicles exit. Clearly indicate your intention to leave, and proceed around the corner into Powell Street.
  - Do not drop children on the opposite verge of either Orchid or Powell Streets. This is particularly dangerous for both children and drivers.
- Afternoon:
  - Pick up line: Clearly display laminated name cards on dashboard or visor, to facilitate pick up. Proceed in an orderly manner and stay in line. Do not leave your vehicle to pick up children from class. Children are to enter the car on the footpath side. Where safe, drivers are asked to move along the designated area as vehicles exit.



## St Denis School Parents and Friends Association

- Clearly indicate your intention to leave, and proceed around the corner into Powell Street.
- If parked in Powell St, please be mindful of the limited parking available and leave the area quickly. Proceed straight along (west) along Powell Street, thus creating a predominantly one way traffic during this peak period.



### CYCLING/WALKING

- Children are asked to use the footpaths where available, and practice safe walking habits when crossing roads.
- Children are required to wear a helmet if cycling to and from school.
- Bikes are to be walked when entering school grounds, and to be secured immediately in the designated area near the year 6 classroom.



St Denis School  
Parents and Friends Association

